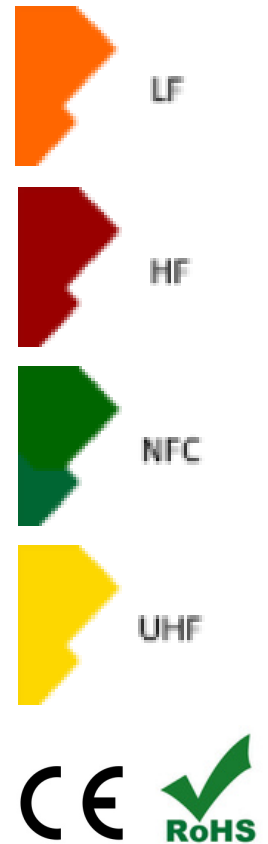


RFID RAPTORY TAG



The Global Tag **RAPTORY Tag** is a rugged on-metal industrial hard tag with IP68 protection, specifically designed to ensure reliable performance in harsh environments, including exposure to dust, water, and extreme conditions, both indoor and outdoor.

It features two integrated mounting holes for quick and secure installation using screws, and can also be applied using high-quality 3M adhesive foam, which guarantees excellent adhesion even on uneven or irregular surfaces.

RAPTORY is available in LF, HF, UHF, and NFC, offering maximum flexibility for a wide range of applications such as asset tracking, industrial automation, and logistics. In addition, it supports various customization options, including color molding, UID or serial number engraving, and memory encoding, allowing it to be fully tailored to specific project requirements.

MECHANICAL AND ENVIRONMENTAL SPECIFICATIONS

Dimensions: 95x25x13mm (with foam adhesive 3mm) / 3,74x0,98x0,51 in

Mounting System: Rivet Holes (two holes) : ϕ 4mm (0,16 in) and Foam Adhesive (3M 467) for irregular surface

Weight: 7gr

Material: High Quality ABS (for case) – Foam with 3M 467 adhesive (for support layer)

Color: Generally white grey – Available optionally any other colors

Class Protection: IP68 (Totally protected against ingress of solid / Protected against long period of immersion)

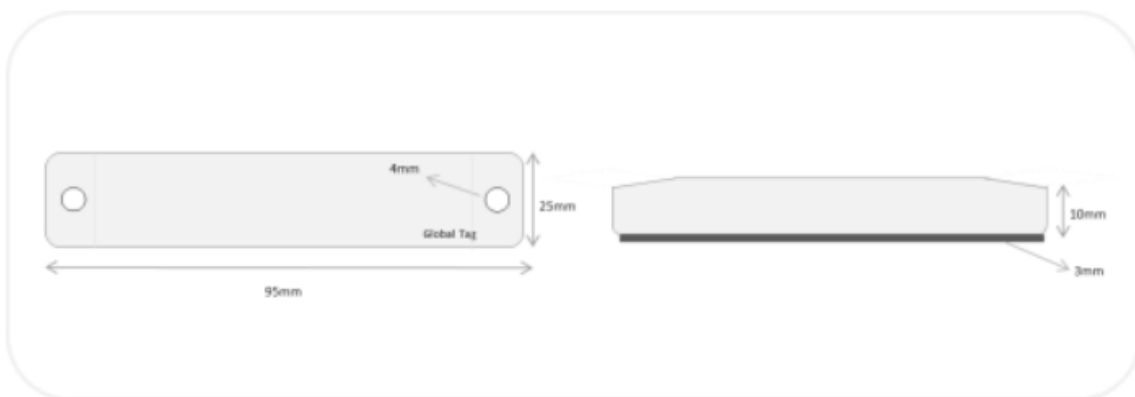
Storage Temperature: -55°C (for 3h) to +100°C (for 2h) / -67°F (for 3h) to +230°F (for 2h) (for any other particular request contact us)

Operating Temperature: -25°C to +85°C / -13°F to +185°F

Weather Ability: Very Good, including UV resistance and sea water

Delivery format: Individual

Expected lifetime: Years in normal operating conditions



TYPES OF RFID CHIPS:

LF: Available with TK4100, T5577. Other on request.

HF: Available with I-Code SLIX, I-Code SLIS, Mifare Ultralight, Mifare Classic 1K, Mifare Classic 4K, Mifare Plus X 4K, Mifare Desfire 4K, STM LRI2k, Ntag213, Ntag216, other on request

UHF: Available with NXP Ucode8 or Alien Higgs9 chip. Others on request.

CUSTOMIZATION OPTIONS:

Printing laser engraving: Serial UID, serial progressive number from database, randomize number from database text and Barcode or QRCode. Other customization on required

Pre-Encoding: Customer specific encoding of EPC or User Memory (also from Database). Locking permanently or with password. Insert into Database TID code.

INSTALLATION MODE:

With 3M 467MP Adhesive model: when mounting the tag with adhesive background, clean and dry the surface for obtaining maximum bond strength. For more information about adhesive check at this link: <https://multimedia.3m.com/mws/media/3269310/200mp-fiche-technique3mtm.pdf>

With Screws: Size M4.

With Pop Rivet: Size 4mm. We have available rivet and also optional Manual pistol rivet.

APPLICATION NOTE:

Asset management: **RAPTORY** can be used to track and manage corporate asset even when they are outdoors or in harsh conditions. With adhesive and also with screw it's very easy to applied.

Production management: **RAPTORY** helps to track and trace all production steps inserting in memory all information for the quality control, production batch, timing of production and so on.

Logistics, supply chain and Yard management: **RAPTORY** is made to control container, pallets, carts, construction vehicles or again trains and rails.

Waste bin management: **RAPTORY** can be applied on waste bins both plastic or metallic material; this Qu-id help to simplify project and help to have only one tag for all type of waste bins.

Maintenance: **RAPTORY** is a strong tag made to improve the maintenance service.

ORDER INFORMATION:

**Standard product is made with ABS Material and Foam adhesive 3mm
PRODUCT CODE: GT-RPTRY-xx (xx is the selected IC chip)**

**On demand we can also produce transponder with different color or
with other type of customization**

**Contact us for more information: Global Tag Srl – Via Zanardelli 13/A
25062 Concesio (BS) - Italy**

P +39 030 2005259

S global-tag

W www.global-tag.com

M info@global-tag.com

DISCLAIMER:

The information in this document is subject to change without notice. Global Tag assumes no responsibility for any errors that may appear in this document. Application recommendations are guidelines only - actual results may vary and should be confirmed. This is a general-purpose product not designed or intended for any specific application. Global Tag Srl or its subsidiaries are not responsible for the performance or support of third party products and does not make any representations or warranties whatsoever regarding quality, reliability, functionality, or compatibility of these devices or products.

© Copyright 2025 - Global Tag Srl