

# RFID UHF ON-METAL LABELS



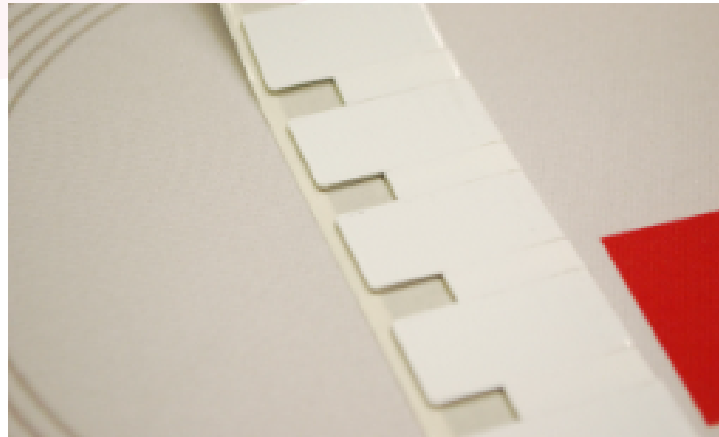
Global Tag **METALLY RFID UHF** on-metal labels are designed for both indoor and outdoor applications where high performance, easy and quick installation on metal surfaces, and on-site printing are required.

To meet different project needs, the Metally range is available in four sizes: **30x15 mm**, **60x12 mm**, **60x27 mm**, and **97.5x27 mm**, ensuring flexibility across various use cases.

Metally is ideal for maintenance operations, tracking of metal pipes, container traceability, and any application where reliable performance on metal surfaces is essential. Its robust construction ensures durability and consistent readability even in demanding environments.

The labels are optimized to deliver stable RFID performance directly on metal, minimizing interference and ensuring accurate data capture over time.

## RFID UHF ON-METAL LABEL 30X15MM



Global Tag **METALLY 30x15**, UHF On-Metal label, has been designed for indoor and outdoor uses where good performance and easy and quick installation on metal surfaces are required, as well as the possibility to print the label in loco.

The PET surface and the strong backside glue make the tag a great solution for both indoor and outdoor use.

Metally is suitable for maintenance application, tracking of metal pipes, container traceability as well as every application in which the main requirement is a tag for metal surfaces.

### **MECHANICAL AND ENVIRONMENTAL SPECIFICATIONS:**

**Dimensions:** 30x15mm

**Mounting System:** Adhesive (3M)

**Weight:** 1g

**Surface Material:** EVA or PET Material

**Color:** Generally white color – Printing options available on request

**Class Protection:** IP67 (Totally protected against ingress of solid / Protected against short periods of immersion in water.)

**Storage Temperature:** -55°C (for 3h) to +100°C (for 2h) / -67°F (for 3h) to +230°F (for 2h) (for any other particular request contact us)

**Operating Temperature:** -20°C to +70°C / 4°F to +158°F

**Weather Ability:** Very Good, including UV resistance and sea water

**Delivery format:** in reel

**Expected lifetime:** 10 Years in normal operating conditions

**Certificate:** EPC Global

## CHIP SPECIFICATION AVAILABLE:

	UHF 860-960MHz
Device type	Class 1 Gen 2
Air interface protocol	ISO18000-6C
IC Type Available	Monza R6; Monza R6-P
Read Range	Up to 4,5 meters

## CUSTOMIZATION OPTIONS:

**Printing options:** serial progressive number from database, randomize number from database text and Barcode or QRCode. Other customizations are available on request.

**Silk Printing:** 2-colors printing logo.

**Pre-Encoding:** Customer specific encoding of EPC or User Memory (also from Database). Locking permanently or with password. Insert into Database TID code.

## INSTALLATION MODE:

**With 3M glue:** when mounting the tag with adhesive background, clean and dry the surface to obtain the maximum bond strength.

## ORDER INFORMATION:

**PRODUCT CODE:** GT-MTLLY3015-MR6P

**Please, contact us for more information:** Global Tag Srl – Via Zanardelli 13/A 25062 Concesio (BS) - Italy

**P** +39 030 2005259

**S** global-tag

**W** www.global-tag.com

**M** sales@global-tag.com

## RFID UHF ON-METAL LABEL 60X12MM



Global Tag **METALLY 60x12**, UHF On-Metal label, has been designed for indoor and outdoor uses where good performance and easy and quick installation on metal surfaces are required, as well as the possibility to print the label in loco.

The PET surface and the strong backside glue make the tag a great solution for both indoor and outdoor use.

Metally is suitable for maintenance application, tracking of metal pipes, container traceability as well as every application in which the main requirement is a tag for metal surfaces.

### **MECHANICAL AND ENVIRONMENTAL SPECIFICATIONS:**

**Dimensions:** 60x12mm

**Mounting System:** Adhesive (3M)

**Weight:** 1g

**Surface Material:** EVA or PET Material

**Color:** Generally white color – Printing options available on request

**Class Protection:** IP67 (Totally protected against ingress of solid / Protected against short periods of immersion in water.)

**Storage Temperature:** -55°C (for 3h) to +100°C (for 2h) / -67°F (for 3h) to +230°F (for 2h) (for any other particular request contact us)

**Operating Temperature:** -20°C to +70°C / 4°F to +158°F

**Weather Ability:** Very Good, including UV resistance and sea water

**Delivery format:** in reel

**Expected lifetime:** 10 Years in normal operating conditions

**Certificate:** EPC Global

## CHIP SPECIFICATION AVAILABLE:

	UHF 860-960MHz
Device type	Class 1 Gen 2
Air interface protocol	ISO18000-6C
IC Type Available	Monza R6; Monza R6-P
Read Range	Up to 5,5 meters

## CUSTOMIZATION OPTIONS:

**Printing options:** serial progressive number from database, randomize number from database text and Barcode or QRCode. Other customizations are available on request.

**Silk Printing:** 2-colors printing logo.

**Pre-Encoding:** Customer specific encoding of EPC or User Memory (also from Database). Locking permanently or with password. Insert into Database TID code.

## INSTALLATION MODE:

**With 3M glue:** when mounting the tag with adhesive background, clean and dry the surface to obtain the maximum bond strength.

## ORDER INFORMATION:

**PRODUCT CODE:** GT-MTLLY6012-MR6P

**Please, contact us for more information:** Global Tag Srl – Via Zanardelli 13/A 25062 Concesio (BS) - Italy

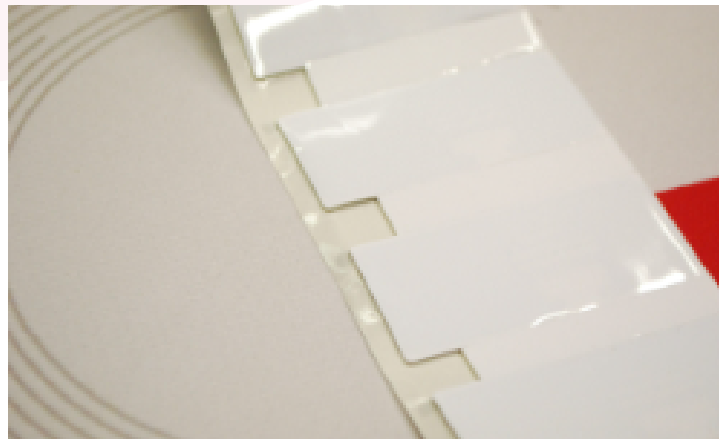
**P** +39 030 2005259

**S** global-tag

**W** www.global-tag.com

**M** sales@global-tag.com

## RFID UHF ON-METAL LABEL 60X27MM



Global Tag **METALLY 60x27**, UHF On-Metal label, has been designed for indoor and outdoor uses where good performance and easy and quick installation on metal surfaces are required, as well as the possibility to print the label in loco.

The PET surface and the strong backside glue make the tag a great solution for both indoor and outdoor use.

Metally is suitable for maintenance application, tracking of metal pipes, container traceability as well as every application in which the main requirement is a tag for metal surfaces.

### **MECHANICAL AND ENVIRONMENTAL SPECIFICATIONS:**

**Dimensions:** 60x27mm

**Mounting System:** Adhesive (3M)

**Weight:** 1,5g

**Surface Material:** EVA or PET Material

**Color:** Generally white color – Printing options available on request

**Class Protection:** IP67 (Totally protected against ingress of solid / Protected against short periods of immersion in water.)

**Storage Temperature:** -55°C (for 3h) to +100°C (for 2h) / -67°F (for 3h) to +230°F (for 2h) (for any other particular request contact us)

**Operating Temperature:** -20°C to +70°C / 4°F to +158°F

**Weather Ability:** Very Good, including UV resistance and sea water

**Delivery format:** in reel

**Expected lifetime:** 10 Years in normal operating conditions

**Certificate:** EPC Global

## CHIP SPECIFICATION AVAILABLE:

	UHF 860-960MHz
Device type	Class 1 Gen 2
Air interface protocol	ISO18000-6C
IC Type Available	Monza R6; Monza R6-P
Read Range	Up to 6 meters

## CUSTOMIZATION OPTIONS:

**Printing options:** serial progressive number from database, randomize number from database text and Barcode or QRCode. Other customizations are available on request.

**Silk Printing:** 2-colors printing logo.

**Pre-Encoding:** Customer specific encoding of EPC or User Memory (also from Database). Locking permanently or with password. Insert into Database TID code.

## INSTALLATION MODE:

**With 3M glue:** when mounting the tag with adhesive background, clean and dry the surface to obtain the maximum bond strength.

## ORDER INFORMATION:

**PRODUCT CODE:** GT-MTLLY6027-MR6P

**Please, contact us for more information:** Global Tag Srl – Via Zanardelli 13/A 25062 Concesio (BS) - Italy

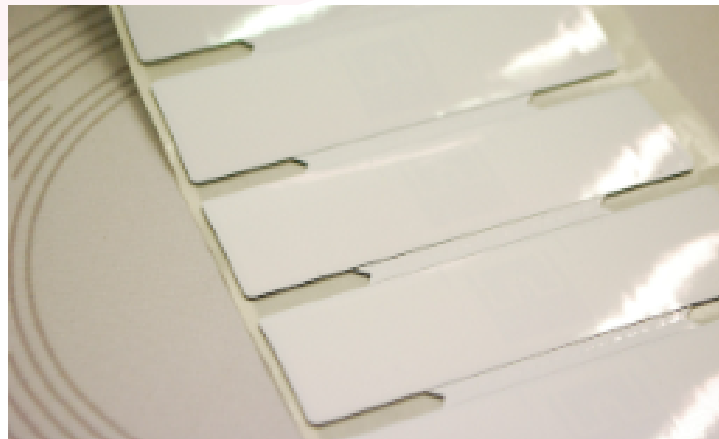
**P** +39 030 2005259

**S** global-tag

**W** www.global-tag.com

**M** sales@global-tag.com

## RFID UHF ON-METAL 97X27MM



Global Tag **METALLY 97,5x27**, UHF On-Metal label, has been designed for indoor and outdoor uses where good performance and easy and quick installation on metal surfaces are required, as well as the possibility to print the label in loco.

The PET surface and the strong backside glue make the tag a great solution for both indoor and outdoor use.

Metally is suitable for maintenance application, tracking of metal pipes, container traceability as well as every application in which the main requirement is a tag for metal surfaces.

### **MECHANICAL AND ENVIRONMENTAL SPECIFICATIONS:**

**Dimensions:** 97,5x27mm

**Mounting System:** Adhesive (3M)

**Weight:** 2g

**Surface Material:** EVA or PET Material

**Color:** Generally white color – Printing options available on request

**Class Protection:** IP67 (Totally protected against ingress of solid / Protected against short periods of immersion in water.)

**Storage Temperature:** -55°C (for 3h) to +100°C (for 2h) / -67°F (for 3h) to +230°F (for 2h) (for any other particular request contact us)

**Operating Temperature:** -20°C to +70°C / 4°F to +158°F

**Weather Ability:** Very Good, including UV resistance and sea water

**Delivery format:** in reel

**Expected lifetime:** 10 Years in normal operating conditions

**Certificate:** EPC Global

## CHIP SPECIFICATION AVAILABLE:

	UHF 860-960MHz
Device type	Class 1 Gen 2
Air interface protocol	ISO18000-6C
IC Type Available	Monza R6; Monza R6-P
Read Range	Up to 6,5 meters

## CUSTOMIZATION OPTIONS:

**Printing options:** serial progressive number from database, randomize number from database text and Barcode or QRCode. Other customizations are available on request.

**Silk Printing:** 2-colors printing logo.

**Pre-Encoding:** Customer specific encoding of EPC or User Memory (also from Database). Locking permanently or with password. Insert into Database TID code.

## INSTALLATION MODE:

**With 3M glue:** when mounting the tag with adhesive background, clean and dry the surface to obtain the maximum bond strength.

## ORDER INFORMATION:

**PRODUCT CODE:** GT-MTLLY9727-MR6P

**Please, contact us for more information:** Global Tag Srl – Via Zanardelli 13/A 25062 Concesio (BS) - Italy

**P** +39 030 2005259

**S** global-tag

**W** www.global-tag.com

**M** sales@global-tag.com

**DISCLAIMER:**

The information in this document is subject to change without notice. Global Tag assumes no responsibility for any errors that may appear in this document. Application recommendations are guidelines only - actual results may vary and should be confirmed. This is a general-purpose product not designed or intended for any specific application. Global Tag Srl or its subsidiaries are not responsible for the performance or support of third party products and does not make any representations or warranties whatsoever regarding quality, reliability, functionality, or compatibility of these devices or products.

© Copyright 2025 - Global Tag Srl