



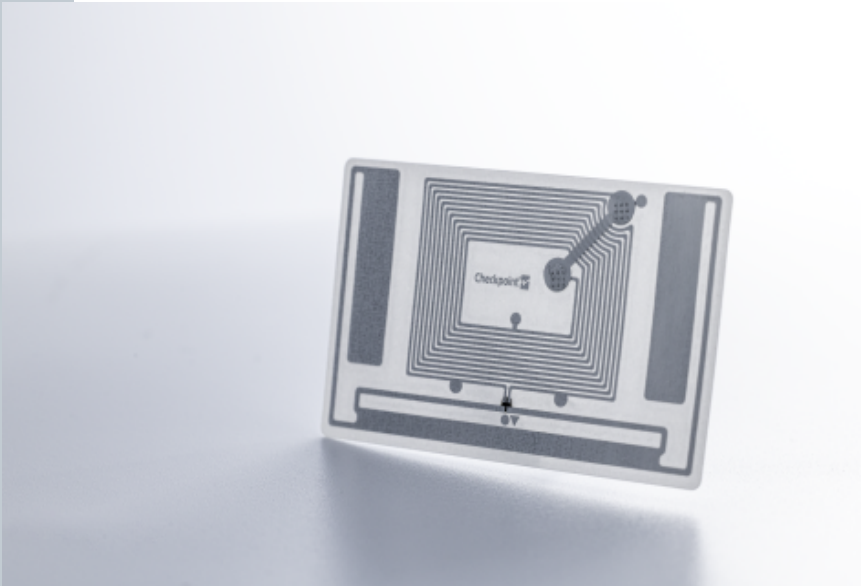
RFID Inlay DUE

EM Microelectronic

EM4425 V12

Dimensions (WxH)

42 mm X26 mm (1.638 " X 1.014 ")



DESCRIPTION

Combining two technologies in one inlay, the DUE Mini label offers brands the chance to engage with their customers through NFC technology whilst realizing the benefits of UHF RFID-controlled inventory management. The inlay can be placed in a range of different solutions to suit your branding and trim requirements; from pocket tags to price stickers and labels. Applying one label saves time and money during the production process and makes it easier and faster to attach to your garments.

RFID SPECIFICATIONS

Protocol	ISO/IEC 18000-63/ EPC Class 1 Gen2, NFC FORUM Type 5 tag, ISO 15694	
Operating Frequency	861 Mhz - 960 Mhz, 13.56 Mhz	
Chip Type	EM4425 V12	
Unique TID / UID	96 bits	
EPC Memory	480 Bits	
User Memory	32 Bits see memory details in comments	
Tag type	UHF + NFC	

INDUSTRIES

Luxury	Retail Apparel
--------	----------------

APPLICATIONS



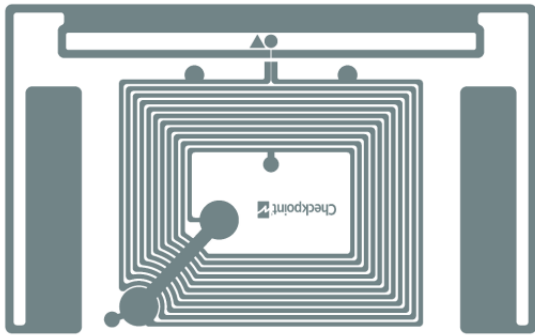
Inventory visibility



Store processs (Cycle Count / item locator / POS)

ARC CATEGORIES

OTHER CERTIFICATIONS

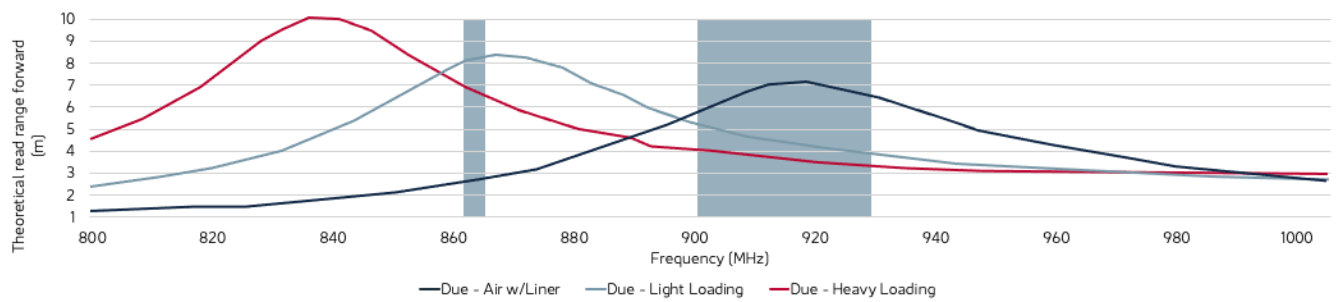


PERFORMANCE

ETSI Read Range	8.20 m
FCC Read Range	4.10 m

READ RANGE

Free Space, Light, & Heavy Loading Conditions



ORIENTATION SENSITIVITY

ETSI

FCC

